

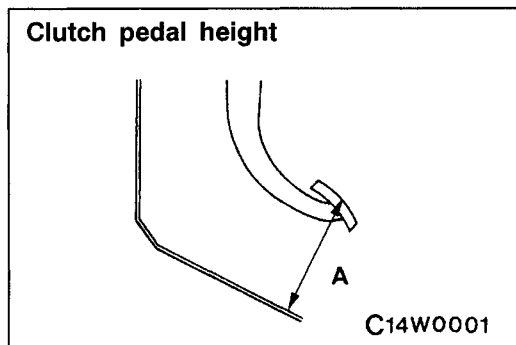
GROUP 21

CLUTCH

GENERAL

OUTLINE OF CHANGE

- Due to the addition of the clutch switch, the following service procedures has been added <1800>.
- (1) Clutch pedal inspection and adjustment
 - (2) Clutch pedal removal and installation
 - (3) Clutch switch check



ON-VEHICLE SERVICE

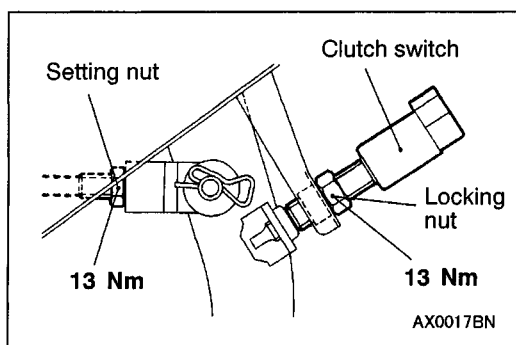
CLUTCH PEDAL INSPECTION AND ADJUSTMENT

The clutch pedal height check and adjustment procedures have been revised as follows. The other procedures are the same as before.

1. Turn up the carpet, etc. under the clutch pedal.
2. Measure the clutch pedal height.

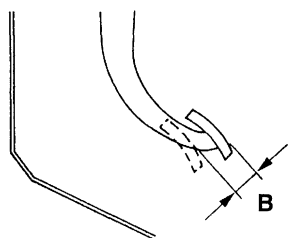
Standard value (A):

- 163.5 - 166.5 mm <L.H. drive vehicles>
- 171.2 - 174.2 mm <R.H. drive vehicles>



3. If the height of the clutch pedal is outside the standard value, loosen the lock nut and adjust the pedal height to the standard value using the clutch switch or push rod.

Clutch pedal clevis pin play



A14W0002

4. Measure the play at the clutch pedal clevis pin.

Standard value (B): 1 – 3 mm

5. If the clutch pedal pin play is not within the standard value, loosen the locking nut and move the push rod to adjust.

Caution

Do not push in the master cylinder push rod at this time.

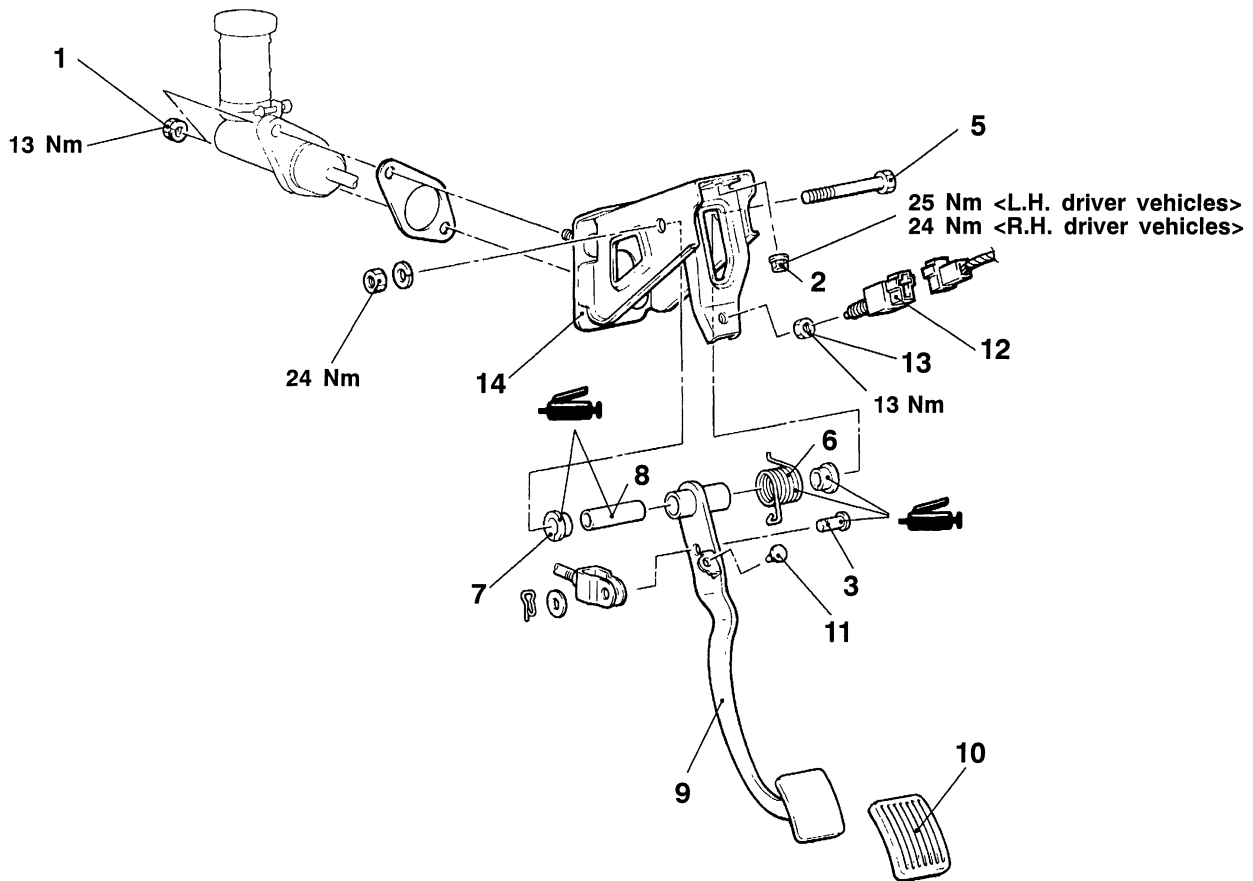
6. Turn back the carpet, etc.

CLUTCH PEDAL <1800>

REMOVAL AND INSTALLATION

Post-installation Operation

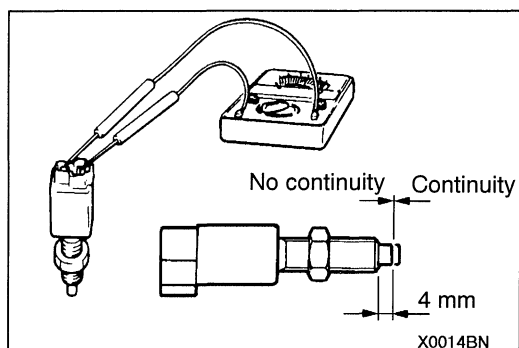
- Clutch Pedal Adjustment (Refer to P.21-1.)



AX0013BN

Removal steps

- | | |
|---|-------------------------------------|
| 1. Clutch master cylinder installation nut | 7. Clutch pedal bushing |
| 2. Master cylinder member installation nut | 8. Pipe |
| 3. Clevis pin | 9. Clutch pedal |
| 4. Pedal support member and clutch pedal assembly | 10. Pedal pad |
| 5. Bolt | 11. Stopper |
| 6. Clutch pedal return spring | 12. Clutch switch |
| | 13. Lock nut |
| | 14. Master cylinder member assembly |



INSPECTION

CLUTCH SWITCH CHECK

1. Connect an ohmmeter between the clutch switch terminals.
2. The clutch switch is in good condition if there is no continuity when the plunger is pushed in to a depth of within 4 mm from the outer case edge surface, and if there is continuity when it is released.